

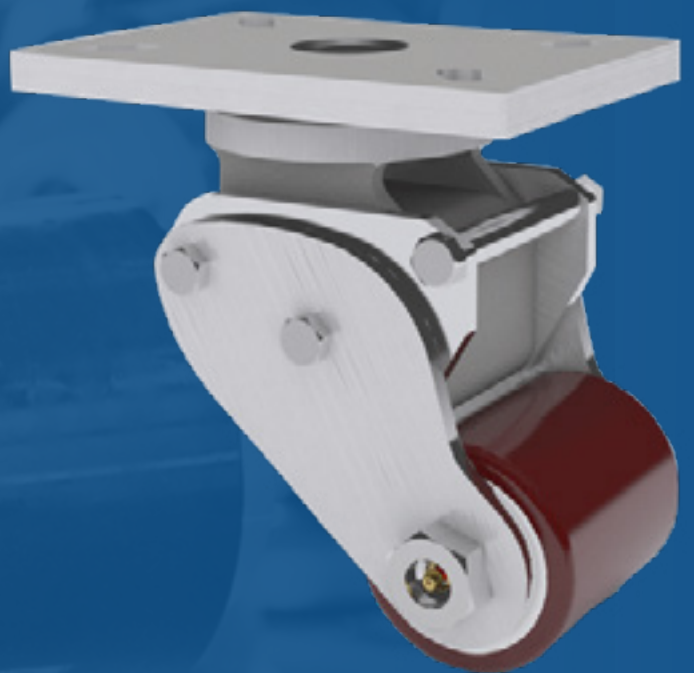


LARCASTER®



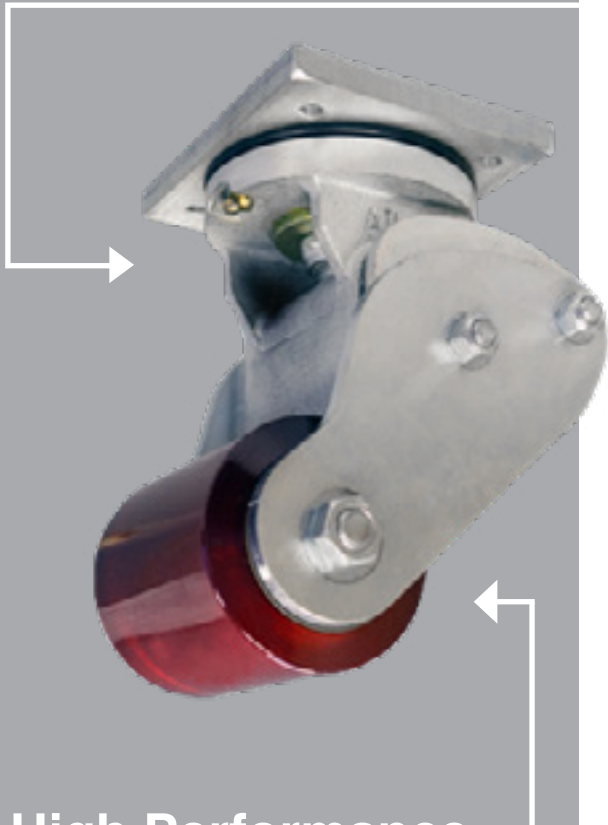
**RUGGED
AND RELIABLE**
FOR YOUR
**TOUGHEST
APPLICATIONS**

INTRODUCING THE
LARCASTER
ELECTRIC PALLET
JACK CASTER LINE



ELECTRIC PALLET JACK CASTER

3-Piece Roller Bearing with Hardened Ground Raceways for Extreme Swiveling & Work Conditions



High Performance Polyurethane



Caster Features

- Larcaster casters are designed for extreme industrial environments.
- Larcaster casters have legs that are fabricated of laser cut steel plate for increased strength. The poly block suspension system and legs, are clamped together with through bolts to eliminate welds and provide a robust assembly for constant swiveling and use.
- The poly spring block creates shock absorption without oscillation or rocking for improved truck cornering which eliminates the use of metal springs, that deteriorate over time.



LARCASTER®
By Caster Concepts, Inc.

LARCASTER “THE ORIGINAL TORSION CASTER”

Wheel Features

- Larcaster Wheels feature maintenance free sealed precision ball bearings for ease of rolling and long life. In applications where there are aggressive wash downs or corrosive environments, zerked axles are available for repacking the grease in the wheels.

Wheel Specifications

Part Number	Wheel Diameter	Wheel Width
LC2000 - LC8651	3	3.5
LC9200	2.5	2.38

Part Number	Top Plate Size	Type of Bolt Hole	Bolt Hole Spacing	Unloaded OAH	Swivel Lead	Zerk Option	Replacement Part Number
LC2000	4.00 X 4.75	Slotted	2.30 X 3.30 Slotted to 2.95 X 3.95	7.38	1.26		L2012
LC2500	4.00 X 4.75	Slotted	2.30 X 3.30 Slotted to 2.95 X 3.95	7.38	1.26	HOLLOW AXLE	L2012
LC2400	5.00 X 5.00	Slotted	3.62 X 2.63 Slotted to 4.11 X 4.11	7.38	1.26	HOLLOW AXLE	L2012
LC2700	4.00 X 4.75	3/8-16 UNC-2B	2.76 X 3.39	7.38	1.26		L2012
LC2750	4.00 X 4.75	3/8-16 UNC-2B	2.76 X 3.39	7.38	1.26	HOLLOW AXLE	L2012
LC2800	4.00 X 4.53	M10 X 1.5-2B	2.80 X 3.29	7.38	1.26		L2012
LC2850	4.00 X 4.53	M10 X 1.5-2B	2.80 X 3.29	7.38	1.26	HOLLOW AXLE	L2012
LC2950	4.00 X 4.53	M10 X 1.5-2B	2.80 X 3.29		1.42	HOLLOW AXLE	L2012
LC3001	5.00 X 7.00	Slotted	2.72 X 4.61 Slotted to 3.43 X 5.32	8.75	1.77		L2012
LC3501	5.00 X 7.00	Slotted	2.72 X 4.61 Slotted to 3.43 X 5.32	8.94	1.56	HOLLOW AXLE	L2012
LC4001	5.00 X 5.38	Slotted	3.75 X 4.00 Slotted to 4.00 X 4.25	8	1.92		L2012
LC4501	5.00 X 5.38	Slotted	3.75 X 4.00 Slotted to 4.00 X 4.25	8	1.92	HOLLOW AXLE	L2012
LC4700	5.00 X 5.38	Slotted	3.75 X 4.00 Slotted to 4.00 X 4.25	7.81	1.43	HOLLOW AXLE	L2012
LC5500	6.00 X 7.00	Slotted	2.72 X 4.61 Slotted to 3.43 X 5.32	7.38	1.26	HOLLOW AXLE	L2012
LC5600	5.00 X 7.00	Slotted	2.72 X 4.61 Slotted to 3.43 X 5.32	7.38	2.57	HOLLOW AXLE	L2012
LC5600NB	5.00 X 7.00	Slotted	2.72 X 4.61 Slotted to 3.43 X 5.32	7.38	2.58	HOLLOW AXLE	L2012
LC6001	5.00 X 7.00	Slotted	2.72 X 4.61 Slotted to 3.43 X 5.32	9.75	1.78		L2012
LC6500	5.00 X 7.00	Slotted	2.72 X 4.61 Slotted to 3.43 X 5.32	9.75	1.78	HOLLOW AXLE	L2012
LC7001	4.00 X 4.75	3/8-16 UNC-2B	2.76 X 3.39	7.38	1.38		L2012
LC7002	4.00 X 4.75	3/8-16 UNC-2B	2.76 X 3.39	7.38	1.38	HOLLOW AXLE	L7007
LC8651	5.00 X 7.00	Slotted	2.72 X 4.61 Slotted to 3.43 X 5.32	7.38	2.57	HOLLOW AXLE	L2012
LC9200	5.51 X 3.54	M8 X 1.24	3.94 X 1.260	6.03	0.68		L9012

MANUFACTURER PART CROSS REFERENCE

BAKER / LAR Part Number		
127520	LC 2000 - Solid Axle	LC 2500 - Lube Axle
138071	LC 2000 - Solid Axle	LC 2500 - Lube Axle
138073	LC 2000 - Solid Axle	LC 2500 - Lube Axle
138075	LC 2000 - Solid Axle	LC 2500 - Lube Axle
139312	LC 2000 - Solid Axle	LC 2500 - Lube Axle
152865	LC 2000 - Solid Axle	LC 2500 - Lube Axle
153858	LC 2000 - Solid Axle	LC 2500 - Lube Axle
154148	LC 2000 - Solid Axle	LC 2500 - Lube Axle
993465	LC 2000 - Solid Axle	LC 2500 - Lube Axle
993994	LC 2000 - Solid Axle	LC 2500 - Lube Axle
154148	LC 2700 Treaded Bolt Holes	LC 2750 - Lube Axle
153858	LC 2700 Treaded Bolt Holes	LC 2750 - Lube Axle
144085	LC 2700 Treaded Bolt Holes	LC 2750 - Lube Axle
BWR	LC 2000 - Solid Axle	LC 2500 - Lube Axle
EWR	LC 2000 - Solid Axle	LC 2500 - Lube Axle
BWR	LC 2700 Treaded Bolt Holes	LC 2750 - Lube Axle
EWR	LC 2700 Treaded Bolt Holes	LC 2750 - Lube Axle

BT Prime Mover / LAR Part Number		
27179		LC 2500 - Lube Axle
27332	LC 2000 - Solid Axle	LC 2500 - Lube Axle
27675	LC 2000 - Solid Axle	LC 2500 - Lube Axle
27849	LC 2000 - Solid Axle	LC 2500 - Lube Axle
SN 20-40	LC 2000 - Solid Axle	LC 2500 - Lube Axle
SR 30	LC 2000 - Solid Axle	LC 2500 - Lube Axle
PE 60W	LC 2000 - Solid Axle	LC 2500 - Lube Axle
HT 60C	LC 2000 - Solid Axle	LC 2500 - Lube Axle
PX 40	LC 2000 - Solid Axle	LC 2500 - Lube Axle
MX 50	LC 2000 - Solid Axle	LC 2500 - Lube Axle
RX 50-65	LC 2000 - Solid Axle	LC 2500 - Lube Axle
PE 40-60	LC 2000 - Solid Axle	LC 2500 - Lube Axle

MANUFACTURER PART CROSS REFERENCE

Raymond / LAR Part Number			
112			
	671-012		LC 5600 - Lube Axle
	671-024		LC 5600 - Lube Axle
	671-041		LC 5600 - Lube Axle
	671-042		LC 5600 - Lube Axle
	1015631		LC 5600 - Lube Axle
	1017847		LC 5600 - Lube Axle
	1082408		LC 5600 - Lube Axle
	671-017	LC 2000 - Solid Axle	LC 2500 - Lube Axle
	671-023	LC 2000 - Solid Axle	LC 2500 - Lube Axle
	671-023/100	LC 2000 - Solid Axle	LC 2500 - Lube Axle
	671-024	LC 2000 - Solid Axle	LC 2500 - Lube Axle
	671-024-100	LC 2000 - Solid Axle	LC 2500 - Lube Axle
	671-024/200	LC 2000 - Solid Axle	LC 2500 - Lube Axle
	671-025	LC 2000 - Solid Axle	LC 2500 - Lube Axle
	671-025/100	LC 2000 - Solid Axle	LC 2500 - Lube Axle
	671-026	LC 2000 - Solid Axle	LC 2500 - Lube Axle
	671-026/100	LC 2000 - Solid Axle	LC 2500 - Lube Axle

Caterpillar / LAR Part Number		
NA 067022		LC 5600 - Lube Axle
NA 067023		LC 5600 - Lube Axle
NPV Series	LC 2000 - Solid Axle	LC 2500 - Lube Axle
1009237	LC 2000 - Solid Axle	LC 2500 - Lube Axle
1009299	LC 2000 - Solid Axle	LC 2500 - Lube Axle
1202032	LC 2000 - Solid Axle	LC 2500 - Lube Axle

Toyota / LAR Part Number			
HB 20		LC 2000 - Solid Axle	LC 2500 - Lube Axle
	00590-00002-71	LC 2000 - Solid Axle	LC 2500 - Lube Axle
	00590-04913-71		LC 5600 - Lube Axle
	00590-39661-71		LC 5600 - Lube Axle
6HBW 30			LC 5600 - Lube Axle
6HBE 30/40			LC 5600 - Lube Axle
6HBC 30/40			LC 5600 - Lube Axle
6TB 50			LC 5600 - Lube Axle
8HBE 30/40			LC 5600 - Lube Axle

MANUFACTURER PART CROSS REFERENCE

MANUFACTURER PART CROSS REFERENCE

Barrett / LAR Part Number			
WRP 040-060		LC 6001 - Solid Axle	LC 6500 - Lube Axle
	27835-003	LC 6001 - Solid Axle	LC 6500 - Lube Axle
	37194003	LC 6001 - Solid Axle	LC 6500 - Lube Axle
	37194006	LC 6001 - Solid Axle	LC 6500 - Lube Axle
WRP 60-80	43380-FS000	LC 3001 - Solid Axle	LC 6500 - Lube Axle
	43380-FS001	LC 3001 - Solid Axle	LC 6500 - Lube Axle
	43380-FS002	LC 3001 - Solid Axle	LC 6500 - Lube Axle

Crown Lift Truck / LAR Part Number			
PE 40-80	076546	LC 2000 - Solid Axle	LC 2500 - Lube Axle
PC 3000	081270	LC 2000 - Solid Axle	LC 2500 - Lube Axle
PC 40-80	082694-001/002/003/004/006	LC 2000 - Solid Axle	LC 2500 - Lube Axle
PW 40-80	084361-001/003/004/006	LC 2000 - Solid Axle	LC 2500 - Lube Axle
WPT/PTE/PTC		LC 2000 - Solid Axle	LC 2500 - Lube Axle
PE 4000-6000	129929-S004		LC 2400 - Lube Axle
	129929-004-OS		LC 2400 - Lube Axle
	113109-01-S		LC 2400 - Lube Axle

YALE / LAR Part Number			
	1501200-33	LC 2000 - Solid Axle	LC 2500 - Lube Axle
ML/W/E			LC 3501 - Lube Axle
MP/W/E/C			LC 3501 - Lube Axle
MP040-60			LC 3501 - Lube Axle
MPE LEN LC 2950	5241536-12		LC 2850 - Lube Axle
MPE LFN LC 2850	7204650-06		LC 2950 - Lube Axle
	5160126-03		LC 3501 - Lube Axle
	5160126-04		LC 3501 - Lube Axle
	5187826-00		LC 3501 - Lube Axle
	5205830-02		LC 3501 - Lube Axle
MPE 060 LFN	524141098	LC 2800 - Solid Axle	LC 2850 - Lube Axle
	524161236		LC 2850 - Lube Axle
	524244219		LC 2850 - Lube Axle
	524267533		LC 2850 - Lube Axle
MPE 060-80 LFN	524146708		LC 2950 - Lube Axle
MPW 080 LEN	524146709		LC 2950 - Lube Axle
	524149484		LC 2950 - Lube Axle
	1501200-33	LC 2000 - Solid Axle	LC 2500 - Lube Axle

HYSTER / LAR Part Number			
	2045445		LC 2950 - Lube Axle
	2045446		LC 2950 - Lube Axle
W60-80XT	2308415		
B40-80XT	23161688	LC 3001 - Solid Axle	LC 3501 - Lube Axle
C60-80XT		LC 3001 - Solid Axle	LC 3501 - Lube Axle
	2007884	LC 3001 - Solid Axle	LC 3501 - Lube Axle
W/B/C 40-60 BL/BF	323772	LC 3001 - Solid Axle	LC 3501 - Lube Axle
W40XT	326410	LC 3001 - Solid Axle	LC 3501 - Lube Axle
W40CL	346202	LC 3001 - Solid Axle	LC 3501 - Lube Axle
WR SERIES	351314	LC 3001 - Solid Axle	LC 3501 - Lube Axle
B40CL	826120	LC 3001 - Solid Axle	LC 3501 - Lube Axle
W40-60XL	826275	LC 3001 - Solid Axle	LC 3501 - Lube Axle
B40-60XL		LC 3001 - Solid Axle	LC 3501 - Lube Axle
	2043682	LC 3001 - Solid Axle	LC 3501 - Lube Axle
	2052734	LC 3001 - Solid Axle	LC 3501 - Lube Axle
	2079240	LC 3001 - Solid Axle	LC 3501 - Lube Axle

HYSTER / LAR Part Number			
MODEL P	1779711		LC 4700 - Lube Axle
	2314632		LC 4700 - Lube Axle
	2743452		LC 4700 - Lube Axle
HWD 567-6896	2779621	LC 4001 - Solid Axle	LC 4501 - Lube Axle
HWD 565-7730	2786022	LC 4001 - Solid Axle	LC 4501 - Lube Axle
HWD 565-8940	2789890	LC 4001 - Solid Axle	LC 4501 - Lube Axle
HWD 565-9005	2314636	LC 4001 - Solid Axle	LC 4501 - Lube Axle
HWD 565-9025		LC 4001 - Solid Axle	LC 4501 - Lube Axle
HWD 565-9028		LC 4001 - Solid Axle	LC 4501 - Lube Axle
HWD 565-9360		LC 4001 - Solid Axle	LC 4501 - Lube Axle
HWD 565-9361		LC 4001 - Solid Axle	LC 4501 - Lube Axle

Superior Tire & Rubber / LAR Part Number	
STR 4000	LC 4001
STR 6000	LC 6001
STR 2000	LC 2000



LARCASTER®

By Caster Concepts, Inc.

**We Build Casters For Specific Stabilizing Needs
Let Us Design One For you...**

16000 E. Michigan Ave., Albion, MI 49224 | 517-629-8838 | www.Larcaster.com

Version 1.0